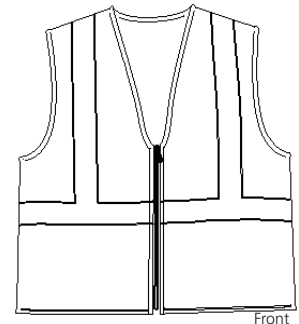
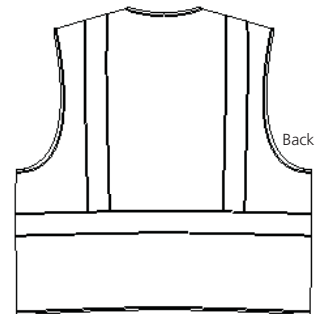


# ANSI Compliant Safety Vest



Front



Back

## CSV400

- \* ANSI Class 2 \* OSHA-compliant \* High-visibility \* 100% polyester oxford
- \* 3M taping \* 2 vertical and 1 horizontal 2" reflective taping on front and back
- \* Dyed-to-match zip closure



### Care Instructions:

Machine wash cold. Do not bleach.  
Tumble dry low. Permanent press  
Do not iron. Do not dry clean.

### Finished Measurements in Inches

Size	S/M	L/XL	2X/3X
Length	25.5	27.5	29.5
Chest	23	27	32
Arm Hole	13	15.5	16.5
Screen Area	9.25	11.5	13.75

### Colors

	Safety Orange/Reflective
	Safety Yellow/Reflective

### Please Note:

Colors shown are approximate and for reference only. For closest match see PMS colors, or for exact match, returnable samples and grommets are available.

Length measured from center back neck seam to hem. Chest measured half measurement 1" under arm hole.  
Arm hole measured half measurement.

### Color Chart

Base Color	Safety Orange	Safety Yellow
Textile PMS	Fluorescent Dye, No Match	Fluorescent Dye, No Match
General PMS	Fluorescent Dye, No Match	Fluorescent Dye, No Match